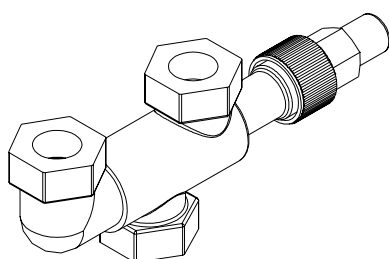


MANIFOLDS for Safety Relief Valves

Type

M1 Inline Manifold

- For use with SR & SRH Relief Valves
- Sizes 1/2", 3/4", 1" & 1-1/4" (13mm, 20mm, 25mm and 32mm)
- Designed to ASHRAE and IIAR Standards

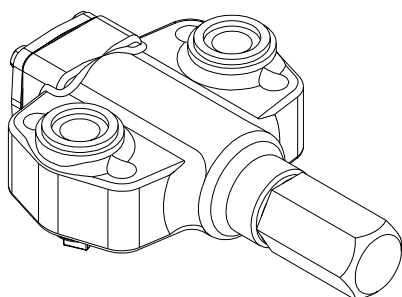


TYPE M1

Type

M2, M3, and M4 Dual Stop Manifold

- For use with H2, H3, H4 & H5 Relief Valves
- Sizes 3/4", 1" & 1-1/4" (20mm, 20mm and 32mm) Inlet connection
- Designed to ASHRAE and IIAR Standards



TYPE M2, M3, M4

Fig. 1

BULLETIN 73-00A



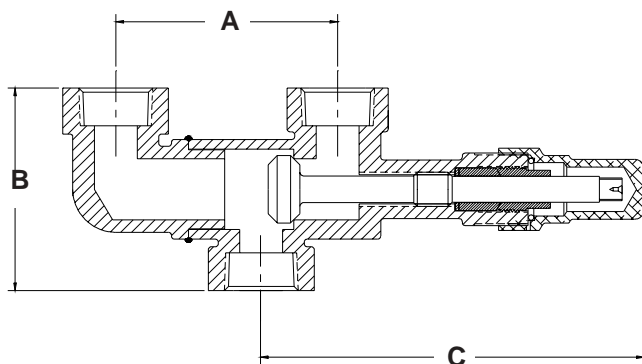
October 2004
Installation and Service Information

Safe Operation (See also Bulletin RSB)

People doing any work on a refrigeration system must be qualified and completely familiar with the system and the Refrigerating Specialties Division valves involved, or all other precautions will be meaningless. This includes reading and understanding pertinent Refrigerating Specialties Division product Bulletins and Safety Bulletin RSB prior to installation or servicing work.

Where cold refrigerant liquid lines are used, it is necessary that certain precautions be taken to avoid damage that could result from liquid expansion. Temperature increase in a piping section full of solid liquid will cause high pressure due to the expanding liquid that can possibly rupture a gasket, pipe or valve. All hand valves isolating such sections should be marked, warning against accidental closing, and must not be closed until the liquid is removed. Check valves must never be installed upstream of solenoid valves, or regulators with electric shut-off, nor should hand valve upstream of solenoid valves or downstream of check valves be closed until the liquid has been removed. It is advisable to properly install relief devices in any section where liquid expansion could take place.

Avoid all piping or control arrangements that might produce thermal or pressure shock. For the protection of people and products, all refrigerant must be removed from the section to be worked on before a valve, strainer, or other device is opened or removed. Flanges with ODS connections are not suitable for ammonia service.

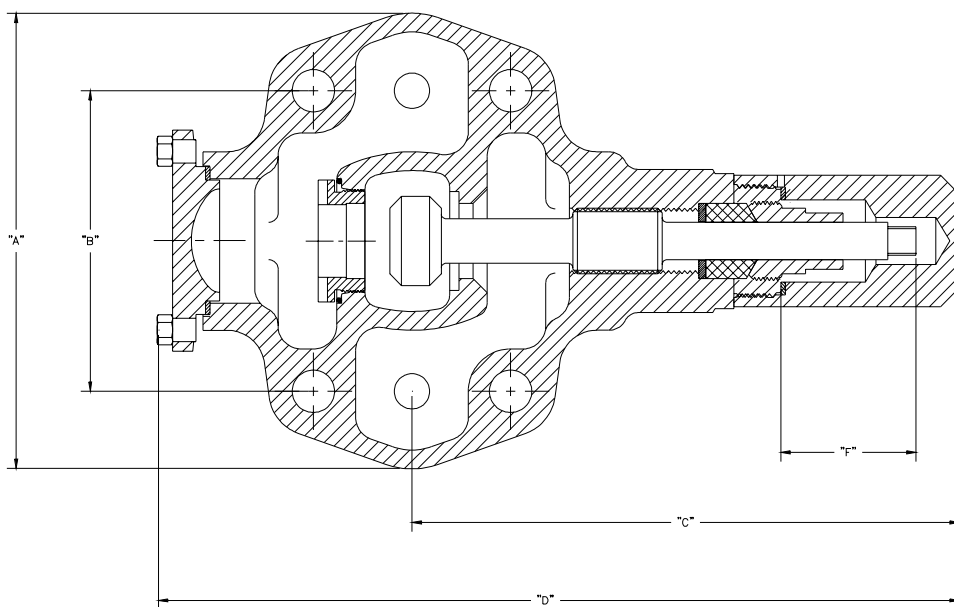


M1

Stem Position	Port No.1	Port No. 2
In	Open	Closed
Out	Closed	Open
Mid	Open	Open

Size	A		B		C	
	mm	inch	mm	inch	mm	inch
1/2"	92	3.6	84	3.3	159	6.3
3/4"	92	3.6	84	3.3	159	6.3
1"	149	5.9	101	4.0	236	9.3
1-1/4"	149	5.9	101	4.0	236	9.3

M2, M3 & M4



DIMENSIONS						
Model	A	B	C	D	E	F
M2	6.062	4.000	7.375	10.687	3.250	1.718
M3	7.187	5.000	7.406	11.062	3.625	1.656
M4	9.125	6.500	7.562	11.687	3.937	1.593

Stem Position	Port No.1	Port No. 2
In	Open	Closed
Out	Closed	Open
Mid	Open	Open

Warranty

All Refrigerating Specialties Products are warranted against defect in workmanship and materials for a period of one year from date of shipment from the factory. This warranty is in force only when products are properly installed, maintained and operated in use and service as specifically stated in Refrigerating Specialties Catalogs or Bulletins for normal refrigeration applications, unless otherwise approved in writing by Refrigerating Specialties Division. Defective products, or parts thereof returned to the factory with transportation charges prepaid and found to be defective by factory inspection will be replaced or repaired at Refrigerating Specialties' option, free of charge, F.O.B. factory. Warranty does not cover products which have been altered or repaired in the

field; damaged in transit, or have suffered accidents, misuse, or abuse. Products disabled by dirt, or other foreign substances will not be considered defective.

THE EXPRESS WARRANTY SET FORTH ABOVE CONSTITUTES THE ONLY WARRANTY APPLICABLE TO REFRIGERATING SPECIALTIES PRODUCTS, AND IS IN LIEU OF ALL OTHER WARRANTIES, EXPRESS OR IMPLIED, WRITTEN OR ORAL, INCLUDING ANY WARRANTY OF MERCHANTABILITY, OR FITNESS FOR A PARTICULAR PURPOSE. No employee, agent, dealer or other person is authorized to give any warranties on behalf of Refrigerating Specialties, nor to assume, for Refrigerating Specialties, any other liability in connection with any of its products.